



## XC-9135AVS

### Network Outdoor Visual Intercom

SPON IP PoE Outdoor Video Intercom Station XC-9135AVE is designed to be the smart video intercom solution for outdoor use, the protection level can be reached to IPX5. It allows user to make two-way video intercom to command center on the touch screen. Meanwhile, it supports to release the door remotely by command center.



## MAIN FEATURES

### 1.High-Quality Display and Camera

- 7-inch high-definition capacitive touchscreen with 800×1280 resolution.
- Built-in 2 MP low illuminance, wide dynamic dual camera.



### 2.Advanced Communication and Connectivity

- Digital audio processor for full duplex communication with echo cancellation.
- Multiple call modes including double virtual buttons, virtual numerical dialpad, and call list.
- Offline calling capabilities without server dependency.
- Standard SIP protocol support for easy integration with mainstream SIP PBX systems (Yeastar, Asterisk, Cisco, etc.).

### 3.System Integration and Outdoor Suitability

- Relay I/O port for connecting to third-party external equipment.
- Remote management and online upgrading features.
- Designed for outdoor use with a protection level of IP65.



# SPECIFICATION

## POWER PARAMETERS

Power Supply: DC24V ,1A

Standby Power Consumption: <4W

Overall Power Consumption: ≤6W

## AUDIO & VIDEO PARAMETERS

Audio Codec: MP2, MP3, PCM, ADPCM

Audio Sampling & Bit Rate: 8kHz~44.1kHz, 16bit, 8kbps~320kbps

Built-in Speaker: 3W ,4Ω

S/N(Broadcast-Speaker): 84dB

THD (Total Harmonic Distortion): <1%

Camera: Dual Camera ,1080P

Video Transmission Bit Rate: 512Kbps-1Mbps

## NETWORK PARAMETERS

Network I/F: 10BASE-T/100BASE-TX RJ45

Network Protocol: TCP/IP、UDP、ARP、ICMP、IGMP、SIP、HTTP.

Configuration Method: Web Interface or DevConfig Tool.

## MECHANICAL&ENVIRONMENT PROPERTIES

Display Screen: 7 inch(1280\*800); capacitive touch screen;

Mounting Method: Surface Mount

Installation Environment: Dry Indoor Locations Only

Operating Temperature: 0°C~+45°C (32°F~113°F)

Operating Humidity: ≤90% RH non-condensing

Front Panel Material: Aluminum Alloy

Housing Material: Surface-Treated Steel Plate

Color: Silver

Product Dimensions: 283×140×40.5mm

Product Weight: 1.5KG

Protection Level: IP65

Product Warranty: 2 Years Limited

## ACCESSORIES

2×Terminal(3.81-2P)

4×Inner Hexagon Screw(M3\*8,304)

1×Inner Hexagon L-form Wrench

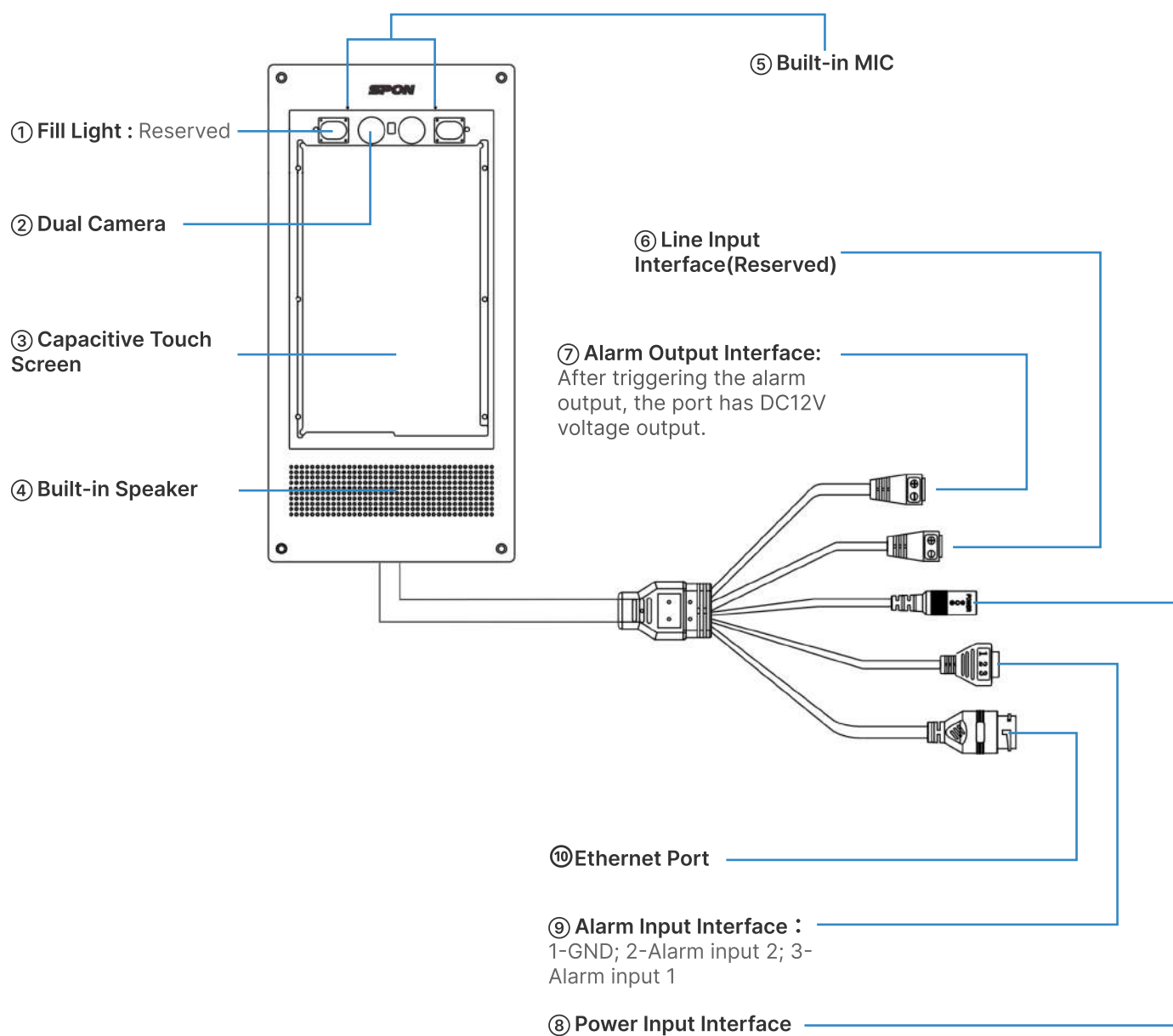
1×Terminal(3.81-3P)

1×Waterproof Connector

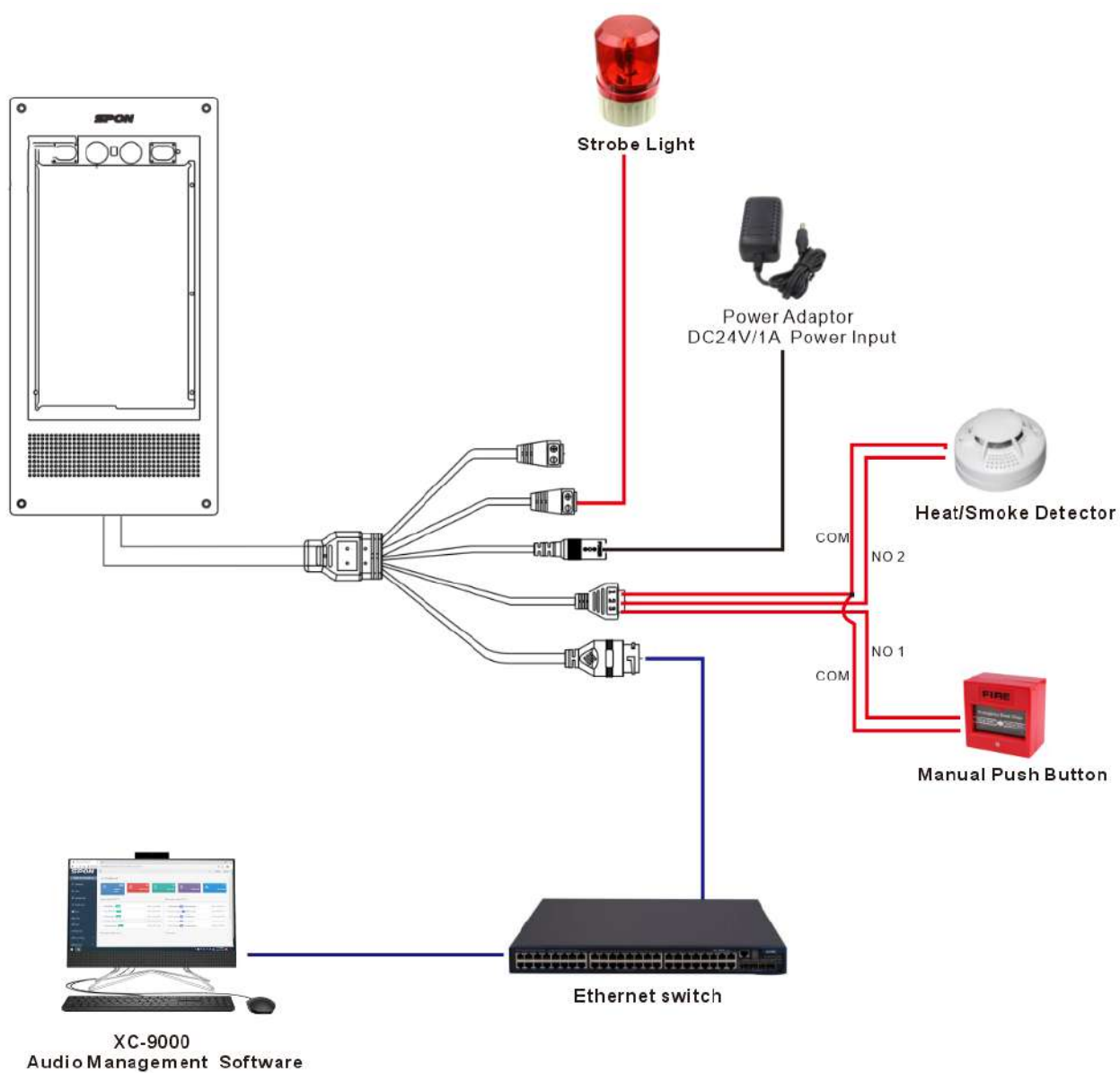
1×Quick Installation Guide

1×Power Adaptor(DC24V/1A)

# PORTS DESCRIPTION



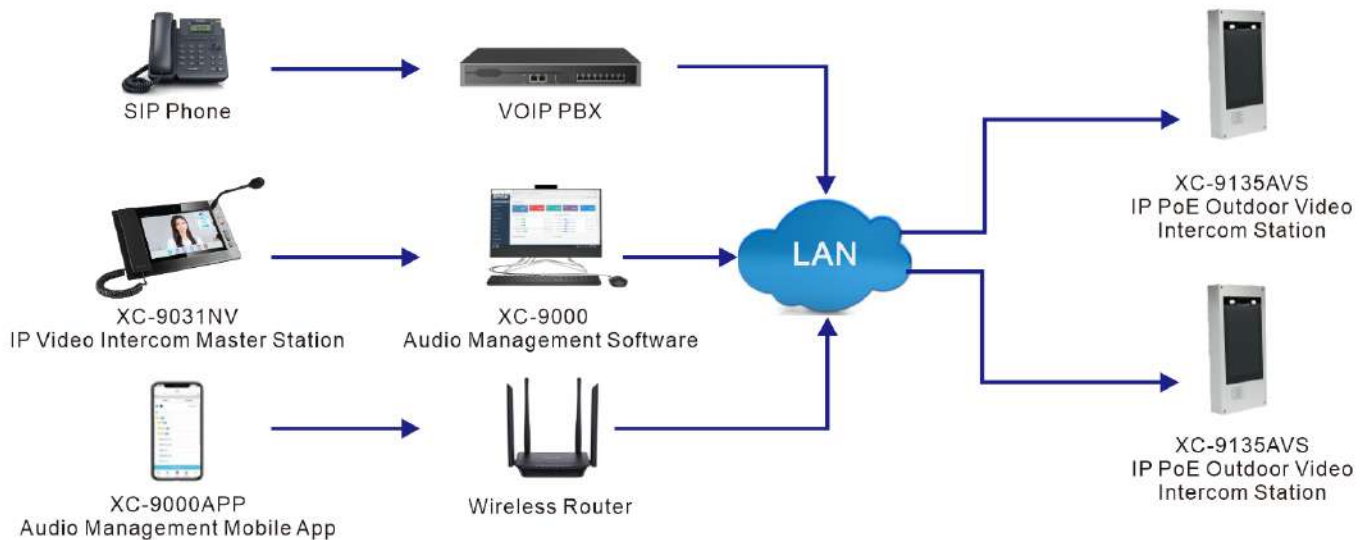
# CONNECTION DIAGRAM



# APPLICATIONS

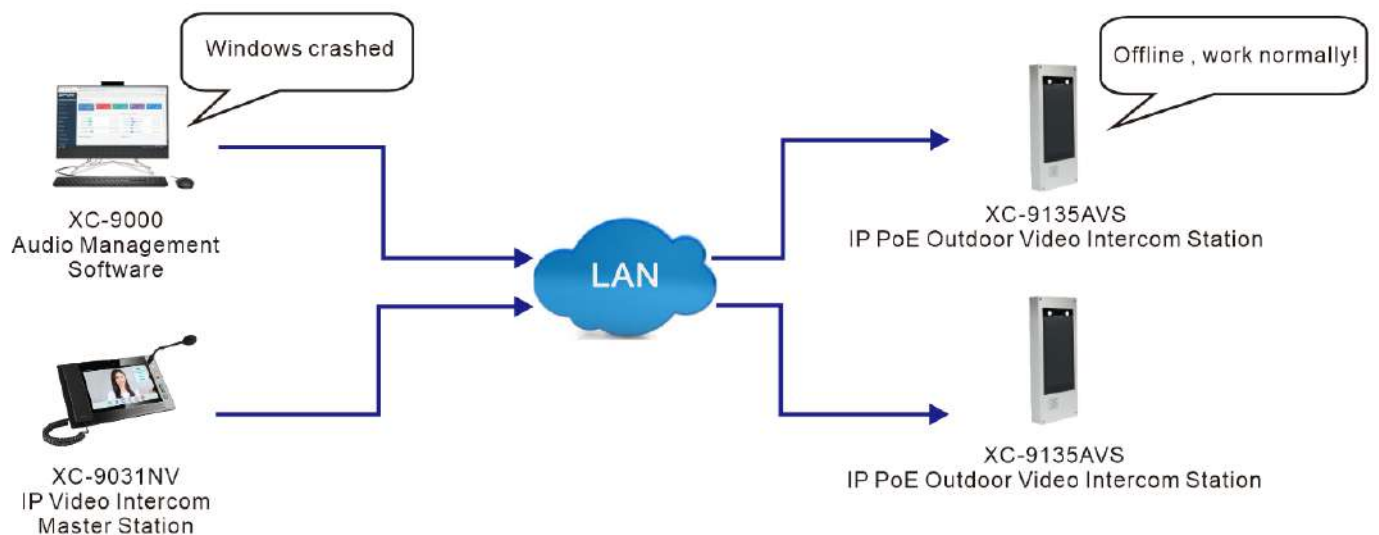
## Application 1

SPON IP PoE Outdoor Video Intercom Station XC-9135AVE can receive video & audio intercom initiated by the 3-rd party VOIP telephone、SPON IP paging microphone/APP(Windows、Android/IOS),etc. Built-in mic for full duplex communication.



## Application 2

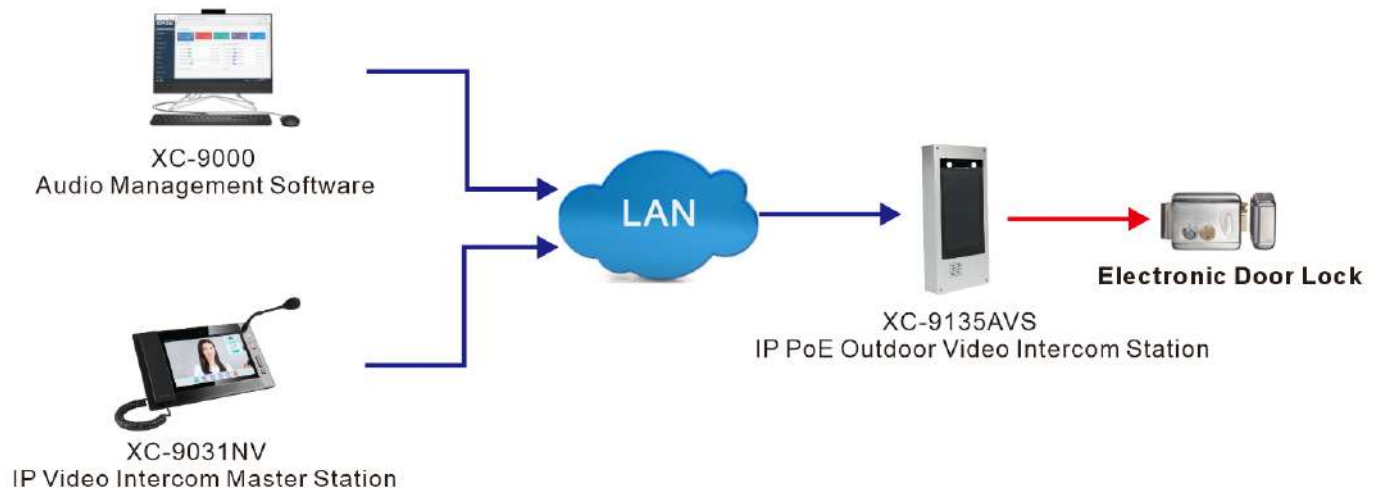
SPON IP PoE Outdoor Video Intercom Station XC-9135AVE support offline intercom , the offline call target need to pre-set on its webpage, when the windows crashed , the system can normally work



# APPLICATIONS

## ■ Application 3

SPON IP PoE Outdoor Video Intercom Station XC-9135AVE equipped with Relay output interface which can be connect to electronic door lock . During intercom with IP Video Paging Console XC-9031NV , the electronic door lock can be released remotely by IP Video Paging Console XC-9031NV.



## DIMENSION DRAWING

- (1) Please open holes of appropriate size in the wall according to the installation size of the bottom shell, install the bottom shell on the wall with an expansion sleeve and half round head cross screws (Note that the arrow is pointing upwards);
- (2) Pass the waterproof tail line through the hole of the waterproof tail line of the surface shell (Upper and lower outlet holes can be selected, or dark line out mode can be selected according to the site environment), and then embed the device in the bottom shell.
- (3) Use 4 M3\*8 hexagon socket screws to secure the terminal to the bottom.

