

AI 5G Parking Management Pro Bullet Plus Camera

NDA A ✓

DATASHEET



INTRODUCTION

Milesight AI 5G Parking Management Pro Bullet Plus Camera delivers a complete parking management system with three detection modes: **Occupancy Detection** for large-scale space monitoring, **Parking Detection with LPR** for precise space and license plate management, and **Parking Violation Detection** to identify illegal parking. Combined with 24/7 scene adaptability, it provides an all-in-one solution for smarter, more efficient outdoor parking management.

KEY FEATURES

Intelligent AI Parking Detection

Occupancy Detection based on AI algorithm can realize simultaneous detection and management of up to 100 parking spaces with up to 98% detection accuracy.

Parking Detection with LPR based on AI LPR algorithm can realize simultaneous detection and management of up to 6 parking spaces with LPR.

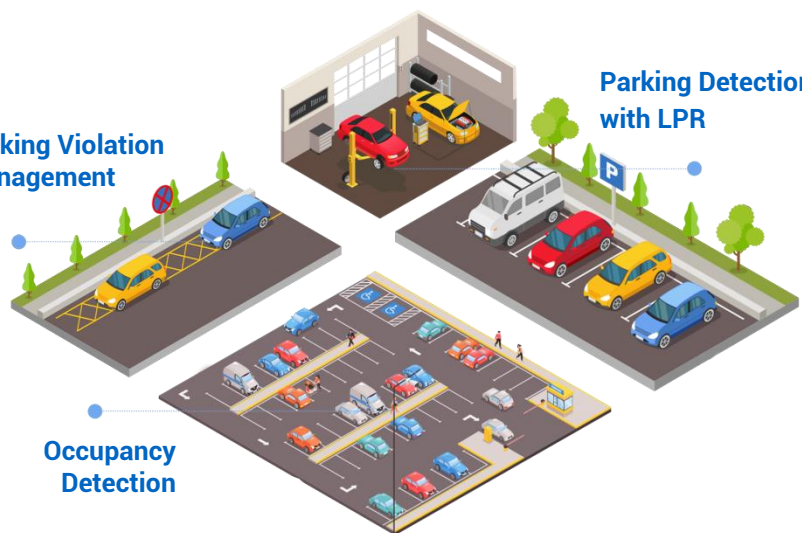
Parking Violation Detection can further identify and record illegal parking behavior.

These three parking management modes greatly help guide parking and realize more efficient and intelligent parking management.

Parking Violation Management

Parking Detection with LPR

Occupancy Detection



AI LPR

Up to 6 Parking Spaces for
Parking Detection with LPR

Up to 100

Up to 100 Parking Spaces for
Occupancy Detection.

>98%

High Accuracy

Parking Violation

Parking Violation Management

AI 5G Parking Management Pro Bullet Plus Camera



Camera	Name	PMC8266-FGPE (4K)
	Image Sensor	1/1.8" Progressive Scan CMOS
	Min. Illumination	Color: 0.009Lux@F1.4 B/W: 0Lux with IR on
	WDR	120dB Super WDR
	Shutter Time	1/100000s~1s
	Illumination Distance	Up to 65m
	Day/Night Mode	Day/Night/Auto/Customize/Schedule
	S/N	>55dB
Parking Management	Parking Application Mode	Occupancy Detection/ Parking Detection/ Parking Violation Detection
	Parking Space Detection	Up to 6 Parking Spaces for Parking Detection with LPR; Up to 100 Parking Spaces@10m for Occupancy Detection; Up to 2 Violation Zones for Parking Violation Detection (each zone supports multiple vehicles)
	Detection Accuracy	>98%
	Data Report	Triggered Report: when parking space is occupied or released; Interval Report: regular report of entire parking situation
Lens	Lens	Motorized 3.6~10mm@F1.4
	Field of View	H116°~H48°/D134°~D55°/V65°~V27°
	Mount	Φ14
	Focus Control	Auto/Manual
Video	Max. Image Resolution	3840x2160
	Primary Stream	60Hz: 30fps@(3840x2160, 3072x2048, 2592x1944, 2592x1520, 2048x1536, 1920x1080, 1280x960, 1280x720, 704x576) 50Hz: 25fps@(3840x2160, 3072x2048, 2592x1944, 2592x1520, 2048x1536, 1920x1080, 1280x960, 1280x720, 704x576)
	Secondary Stream	60Hz: 30fps@(704x576, 640x480, 640x360, 352x288, 320x240, 320x192, 320x180) 50Hz: 25fps@(704x576, 640x480, 640x360, 352x288, 320x240, 320x192, 320x180)
	Tertiary Stream	60Hz: 30fps@(1920x1080, 1280x720, 704x576, 640x480, 640x360, 320x240, 320x192, 320x180) 50Hz: 25fps@(1920x1080, 1280x720, 704x576, 640x480, 640x360, 320x240, 320x192, 320x180)
	Video Compression	H.265+/H.265(HEVC)/H.264+/H.264/MJPEG
	Video Bit Rate	16Kbps~16Mbps(CBR/VBR Adjustable)
	Privacy Masking	Up to 28 areas(24 mask areas and 4 mosaic areas)
	ROI	Up to 8 areas
	Image Setting	Brightness/Contrast/Saturation/Sharpness

AI 5G Parking Management Pro Bullet Plus Camera



Interface	Ethernet		1*RJ45 10M/100M Ethernet Port
	Audio I/O		1/1
	Alarm I/O		1/1
Mobile Communication Parameter	Wireless Communication		Support 5G/4G/3G
	Frequency Bands	5G NR	n1/n2/n3/n5/n7/n8/n12/n13/n14/n18/n20/n25/n26/n28/n29/n30/n38/n40/n41/n48/n66/n70/n71/n75/n76/n77/n78/n79
		LTE-FDD	B1/B2/B3/B4/B5/B7/B8/B12/B13/B14/B17/B18/B19/B20/B25/B26/B28/B29/B30/B32/B66/B71
		LTE-TDD	B34/B38/B39/B40/B41/B42/B48
		LAA	B46
		WCDMA	B1/B2/B4/B5/B8/B19
	Wireless Transmission Speed	SA	DL 2.4Gbps; UL 900Mbps
		NSA	DL 3.4Gbps; UL 550Mbps
		LTE	DL 1.6Gbps; UL 200Mbps
	SIM Card		Nano SIM
Network	Network Storage		NAS(Support NFS, SMB/CIFS), ANR
	Protocol		IPv4/IPv6, ARP, TCP, UDP, RTCP, RTP, RTSP, RTMP, HTTP, HTTPS, DNS, DDNS, DHCP, FTP, NTP, SMTP, SNMP, UPnP, Bonjour, SIP, PPPoE, VLAN, 802.1x, QoS, IGMP, ICMP, SSL
Audio	Audio Compression		G.711/AAC/G.722/G.726
	Audio Sampling Rate		8/16/32/44.1/48KHz
	Audio Bit Rate		16~256kbps
	Two-way Audio		Support
System	Storage		microSD/SDHC/SDXC Card Local Storage, up to 256G
	Advanced Function		BLC, HLC, 2D DNR, 3D DNR, Defog, AWB, EIS, IP Address Filtering, AGC, Anti-flicker, Corridor Mode, Deblur, Watermark
	SIP/VoIP Support		Yes, Voice & Video-over-IP
	Event Trigger		Motion Detection, Network Disconnection, External Input, Audio Alarm, etc.
	Event Action		FTP Upload, SMTP Upload, SD Card Record, External Output, SIP Phone, HTTP Notification, etc.
	System Compatibility		MQTT, ONVIF Profile G & S & T, API

AI 5G Parking Management Pro Bullet Plus Camera



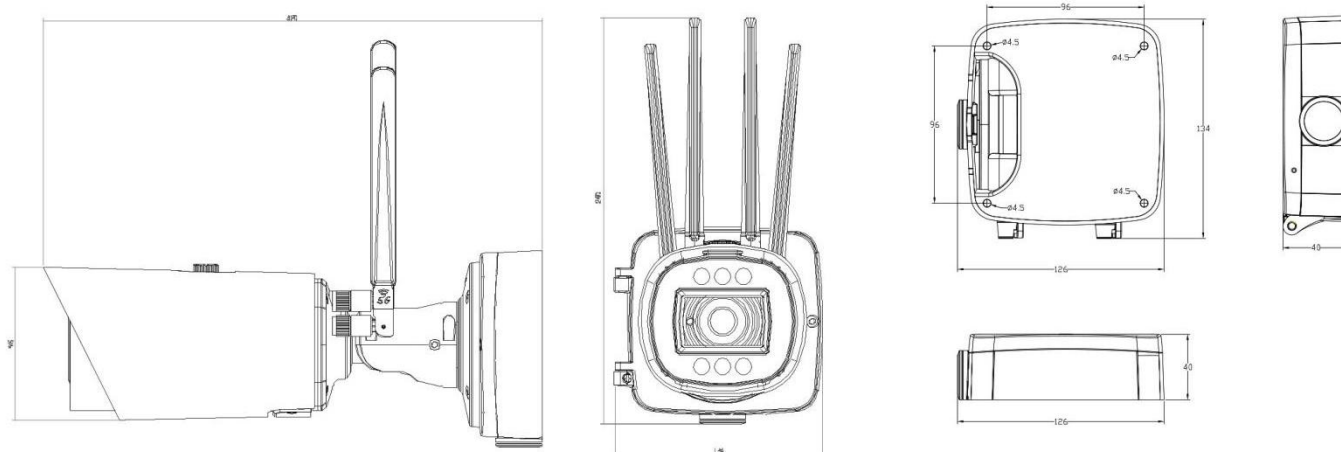
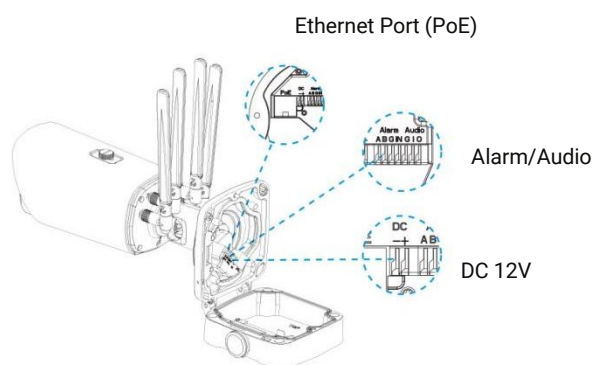
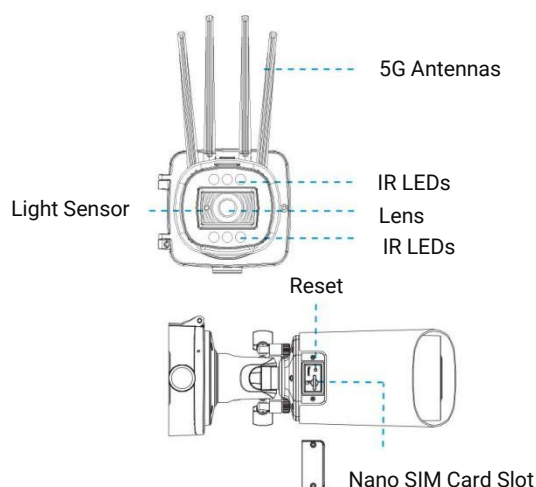
General	Working Temperature	-40°C~60°C
	Working Humidity	0~95%(Non-condensing)
	Power Supply	PoE (802.3af) / DC 12V±10%
	Power Consumption	Min.: 5.22W (DC 12V), 6.28W(PoE) Max.: 11.22W (DC 12V), 12.91W(PoE)
	Housing	Up to IP67-rated for Weather-resistant Performance (Only for camera body)
	Surge Protection	4KV
	Weight	1650g
	Dimensions	320mmX134mmX126mm 320mmX134mmX208mm (With Antennas)
	Warranty	3/5 Years
Certifications	EMC	CE-EMC (EN 55032, EN 55035), FCC (PART 15B)
	Safety	CE-LVD (EN IEC 62368-1)
	RF	CE-RED (EN 301908-1, EN 301908-2, EN 301908-13, EN 301908-25, EN301489-1, EN301489-52, EN 62133)
	Environment	CE-ROHS (Directive (EU) 2015/863 amending 2011/65/EU)

V1.2

AI 5G Parking Management Pro Bullet Plus Camera



Structure Diagrams



Units: mm

Accessories Support

A62 Junction Box (Default)

Weight: 510g

Dimensions: 134*126*40mm



A02 V2 Pole Mount

Weight: 1kg

Dimensions: 180*136*46mm



A03 External Corner Bracket

Weight: 900g

Dimensions: 170*152.5*76.3mm



Milesight | www.milesight.com

Contact Us: sales@milesight.com support@milesight.com



Add: Building c09, Software Park
Phase III, Xiamen 361024, Fujian, China
Tel: +86-592-5922772

