

Entrance & Exit Supplement Light AI LPR Pro Bullet Plus Camera

Supplement Light

Motorized Lens

DATASHEET

NDAA



KEY FEATURES

- ▶ Superior Image Quality (Starlight Sensor, Smart IR II Technology and high frame rate are supported for an excellent image quality.)
- ▶ Evidence Camera Linkage (Link with any regular cameras to capture the overview snapshots as evidence.)
- ▶ LPR Smart Search (Relevant videos can be found quickly by searching for only a portion of the target suspect vehicle's features, such as vehicle type & color, plate color, plate number, direction and etc.,)

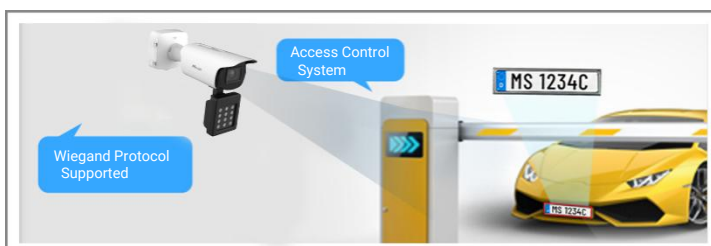
Intelligent AI-powered LPR Algorithm

Entrance & Exit AI LPR Camera can not only recognize vehicle plates in real time, but also identify more vehicle features, like vehicle type, color, etc., generating reliable traffic insights to improve safety and mobility.



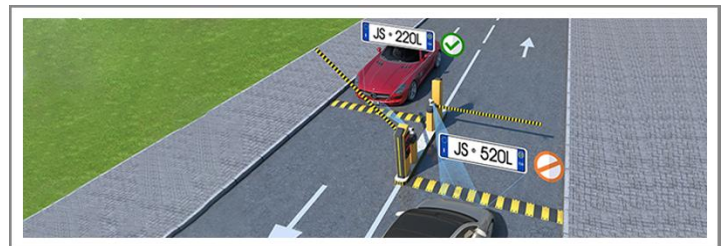
Extensive Compatibility

Entrance & Exit Supplement Light AI LPR Camera support Wiegand Protocol, which allows the easy open integration with third-party VMS or platforms, realizing solutions such as traffic management, toll collection, and access control.



Black and White List and No-plate Event

Entrance & Exit AI LPR Camera enable to achieve stand-alone solutions for license plate recognition as well as no-plate vehicle detection. Alarm is triggered as soon as the corresponding rule-compliant license plate is detected, enabling efficient and accurate access control at any gate.



Integrated Supplement Light

Integrated with supplement light of IR LED Light and White LED Light, Entrance & Exit Supplement Light AI LPR Camera could turn on and off the supplement light, and change the luminance of the supplement lighting automatically, achieving a flexible way for the monitoring control.



Entrance & Exit Supplement Light AI LPR Pro Bullet Plus



Camera	Model	MS-C4466-RFILWPG1 (4MP)
	Image Sensor	1/1.8" Progressive Scan CMOS
	Min. Illumination	Color: 0.001Lux@F1.2 B/W: 0Lux with IR on
	WDR	Support
	Shutter Time	1/100000s~1s
	Day/Night Mode	Day/Night/Auto/Schedule
	S/N	>55dB
Lens	Lens	Motorized 2.8~12mm@F1.2
	Field of View	H114°~H45°/ D116°~D51°/ V57°~V25°
	Mount	Φ14
	P-Iris	Support
	Focus Control	Auto/Manual
Entrance & Exit Management	Max. Vehicle Speed	60km/h
	Capture Rate	99%
	Recognition Accuracy	98%
	Coverage	2 lanes
	Country/Region Supported	More than 80 countries and regions
	ANPR Distance	Up to 20m
	Attributes Identification	Plate Color, Vehicle Type, Vehicle Color, Vehicle Brand, No-plate Vehicle Capture, Vehicle Direction Detection <small>* Vehicle Color and Plate Color identification are not supported under IR conditions.</small>
	Smart Traffic Function	Evidence Camera Linkage
	White/Black List	Up to 100,000 records inside the camera
	LPR Smart Search	Support
Illuminator	Supplement Light	Warm White LED & IR LED
	IR Wave Length (For IR LED Light)	850nm
	Light Bead	9× Warm White LED; 3× IR LED
	Illumination Distance	Up to 25 m
	Light Control	Auto/ IR Mode/ Color Mode
Interface	Ethernet	1* RJ45 10M/100M Ethernet Port
	Audio I/O	1/1
	Alarm Input	2
	Alarm Output	2 (1 relay output; 1 open collector output, max. 12V DC/10mA)
	Wiegand	1
	RS485	1

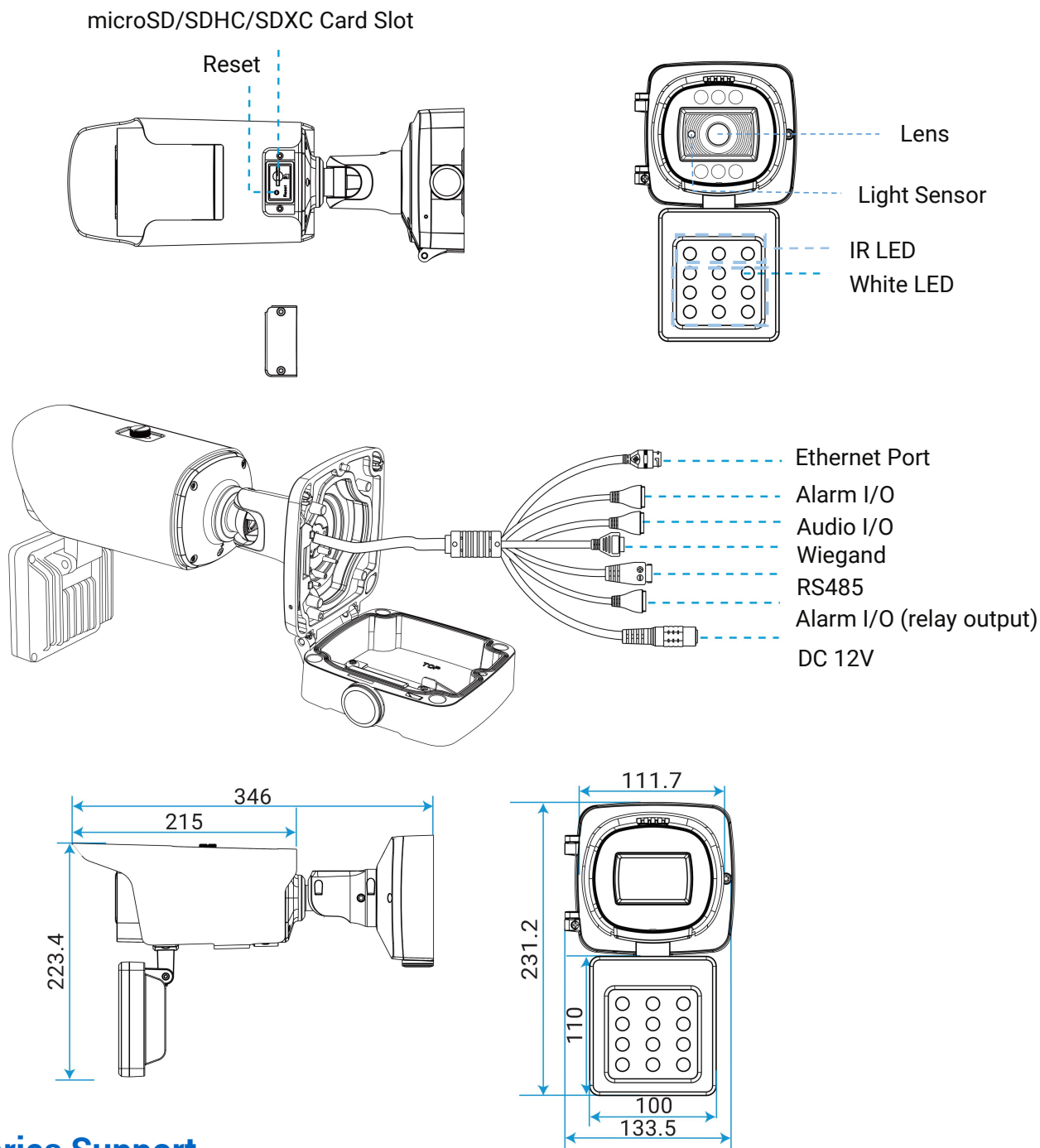
Entrance & Exit Supplement Light AI LPR Pro Bullet Plus



Video	Max. Image Resolution	2688x1520
	Primary Stream	60Hz: 60fps@(2688x1520, 2304x1296, 1920x1080, 1280x720) 50Hz: 50fps@(2688x1520, 2304x1296, 1920x1080, 1280x720)
	Secondary Stream	60Hz: 60fps@(704x576, 640x480, 640x360, 352x288, 320x240) 50Hz: 50fps@(704x576, 640x480, 640x360, 352x288, 320x240)
	Tertiary Stream	60Hz: 30fps@(1920x1080, 1280x720, 704x576, 640x480, 640x360, 352x288, 320x240) 50Hz: 25fps@(1920x1080, 1280x720, 704x576, 640x480, 640x360, 352x288, 320x240)
	Video Compression	H.265+/H.265(HEVC)/H.264+/H.264/MJPEG
	Video Bit Rate	16Kbps~16Mbps(CBR/VBR Adjustable)
	Privacy Masking	Up to 8 Areas (Mask Area and Mosaic Area are optional)
	ROI	Up to 8 areas
	Image Setting	Brightness/Contrast/Sharpness
Network	Network Storage	NAS(Support NFS, SMB/CIFS), ANR
	Protocol	IPv4/IPv6, ARP, TCP, UDP, RTCP, RTP, RTSP, RTMP, HTTP, HTTPS, DNS, DDNS, DHCP, FTP, NTP, SMTP, SNMP, UPnP, Bonjour, SIP, PPPoE, VLAN, 802.1x, QoS, IGMP, ICMP, SSL
Audio	Audio Compression	G.711/AAC/G.722/G.726
	Audio Sampling Rate	8/16/32/44.1/48KHz
	Audio Bit Rate	16~256kbps
	Two-way Audio	Support
System	System Compatibility	API, MQTT, HTTP, TCP, ONVIF Profile G & M & S & T
	Storage	microSD/SDHC/SDXC Card Local Storage, up to 1TB
	Advanced Function	BLC, HLC, 2D DNR, 3D DNR, Defog, AWB, IP Address Filtering, AGC, Anti-flicker, Corridor Mode, Deblur, Watermark
	SIP/VoIP Support	Yes, Voice & Video-over-IP
	Event Trigger	Black/White List, Motion Detection, Network Disconnection, External Input, Audio Alarm, etc.
	Event Action	FTP Upload, SMTP Upload, SD Card Record, External Output, SIP Phone, HTTP Notification, etc.
General	Working Temperature	-40°C~60°C
	Working Humidity	0~95%(Non-condensing)
	Power Supply	PoE (802.3at) / DC 12~28V *Heater and supplementary light are mutually exclusive under PoE power supply.
	Power Consumption	Min.: 4.1W (DC 12~28V), 4.9W(PoE) Max.: 24.6W (DC 12~28V), 28.9W(PoE)
	Weather Proof	Up to IP67-rated for Weather-resistant Performance
	Weight	1445.8g 2100g (With Supplement Light)
	Dimensions	346mmX134mmX223mm
	Warranty	3 Years (5 Years Optional)
Certifications	EMC	CE-EMC (EN 55032, EN 55035), FCC (PART 15B), RCM-EMC (AS/NZS CISPR 32:2015+A1(2020))
	Safety	CE-LVD (EN IEC 62368-1), RCM-LVD (IEC 62368-1:2018)
	Environment	CE-ROHS (Directive (EU) 2015/863 amending 2011/65/EU)



Structure Diagrams



Accessories Support

A02 V2 Pole Mount

Weight: 1kg

Dimensions: 180*136*46mm



A03 External Corner Bracket

Weight: 900g

Dimensions: 170*152.5*76.3mm

